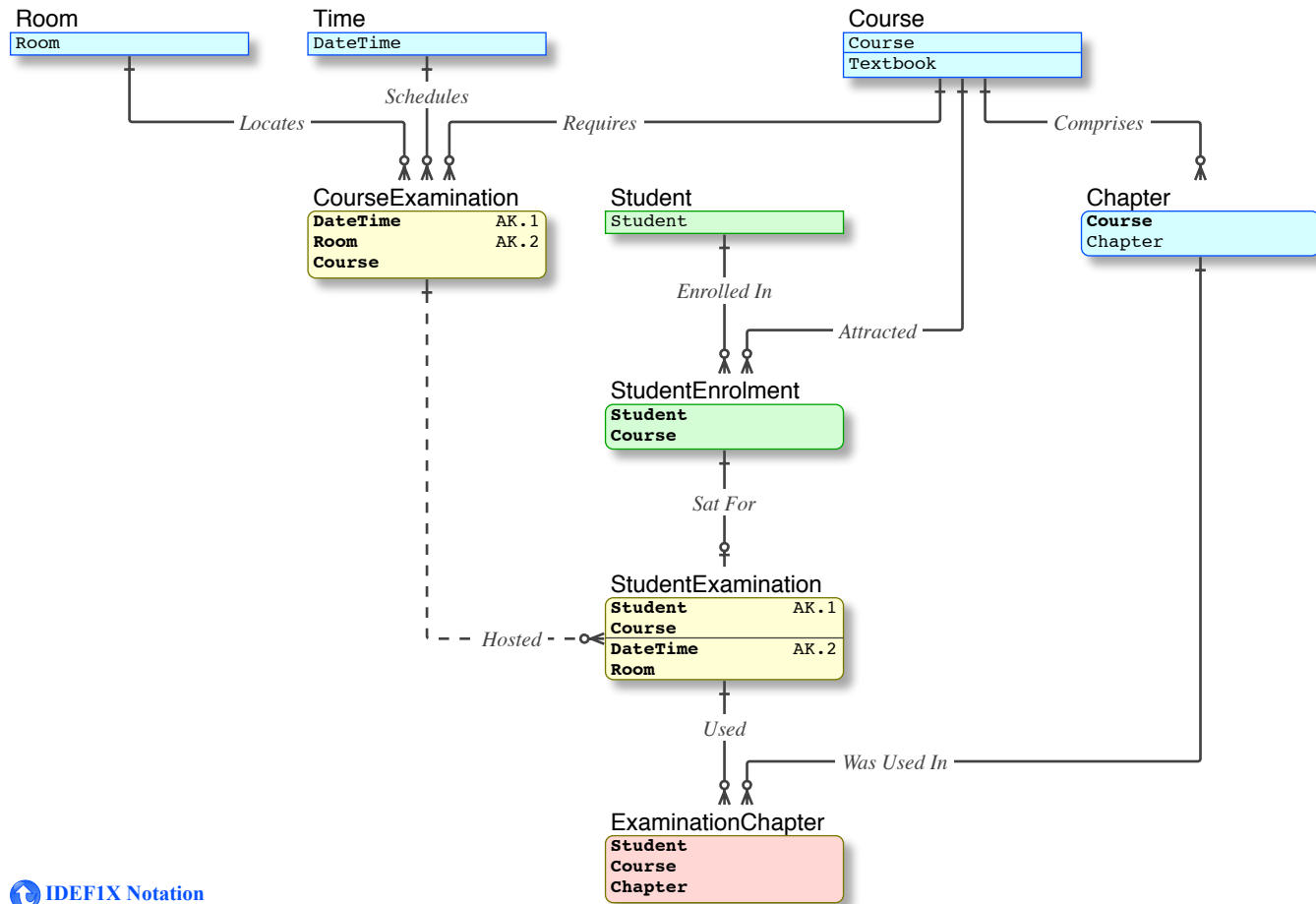


**Data Model/Derek**

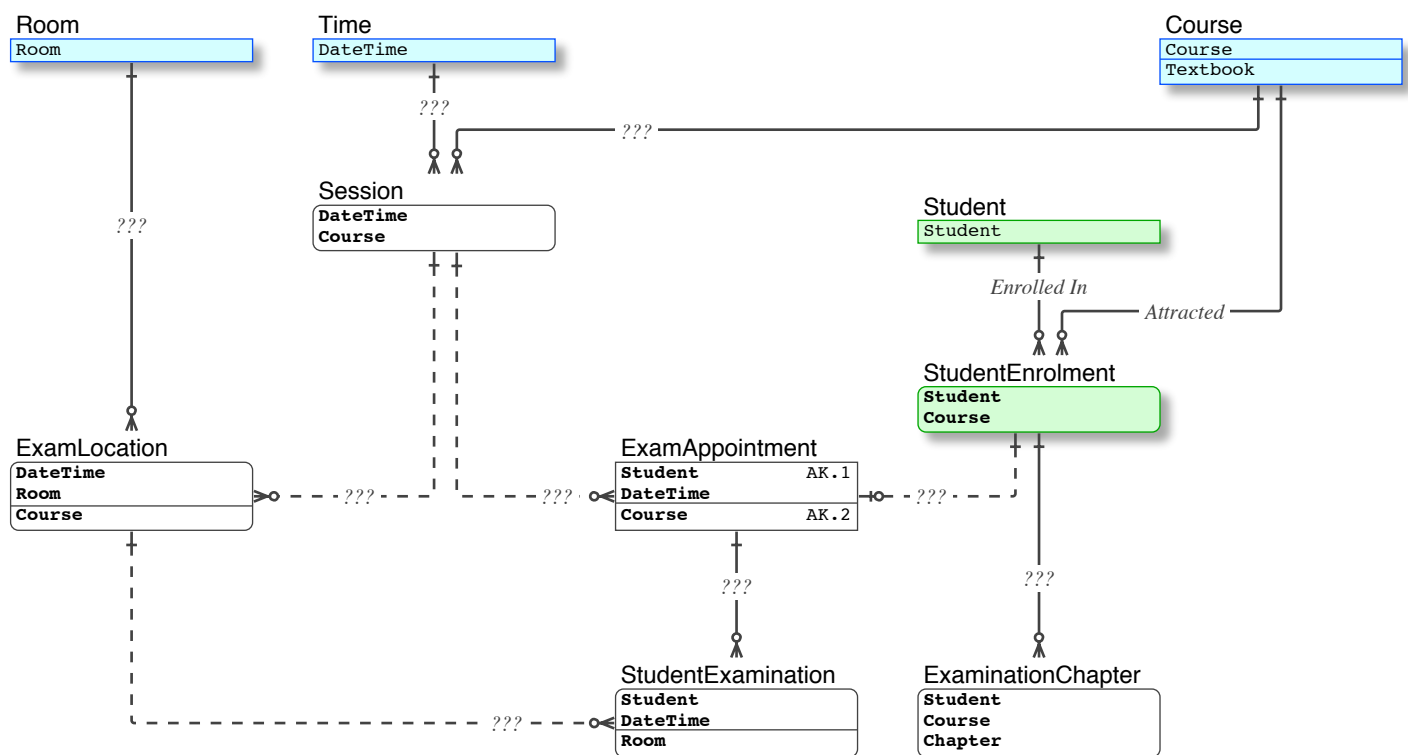
The finished data model is provided for comparison against the progress of the student's emerging model. Of the two arrangements given in the original document, the organisation chart layout has been chosen, because it is easier for novices to understand, the data hierarchies are plain.



IDEFIX Notation

**Data Model/Nicola**

Merely a translation of the text strings given by the student, for the purpose of comparison with the above. With a view to assisting his magistry, I have implemented various items that are absent in the text strings, such as inferring the PKs; inferring Dependent vs Independent; etc. The purpose of each relation remains unidentified, that is not worth inferring, thus I have left placeholders for them.



- Allows more-than-one ExamLocation (eg. two Rooms) per ExamAppointment
- Allows Courses for which the Student has not enrolled
- Allows Courses other than the ExamAppointment
- Allows Chapters that do not exist in the Textbook
- For students who take more than one Course, this allows a Chapters from one Course being used in a StudentExamination of another Course

This page is required to overcome a document production error.