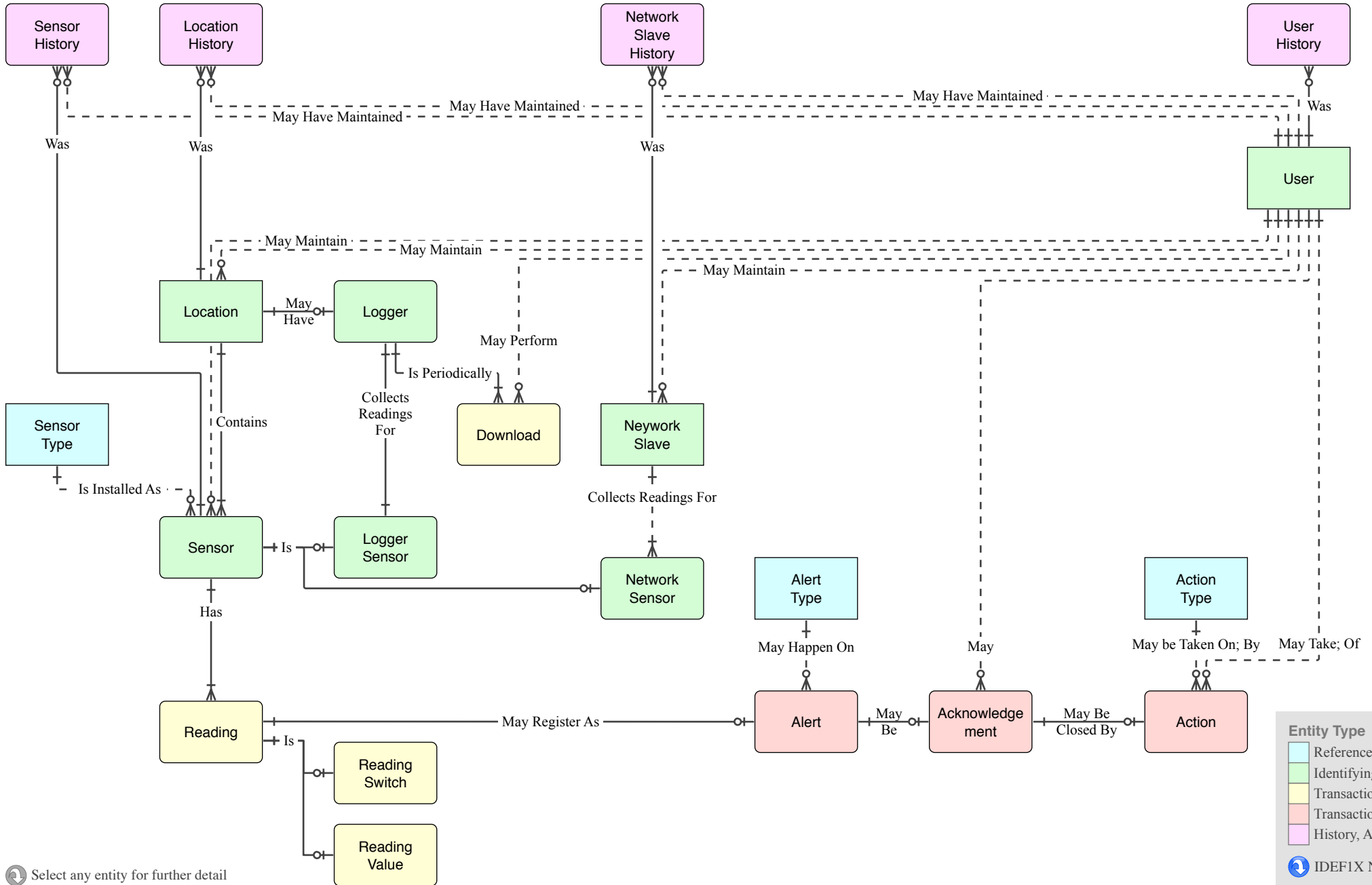


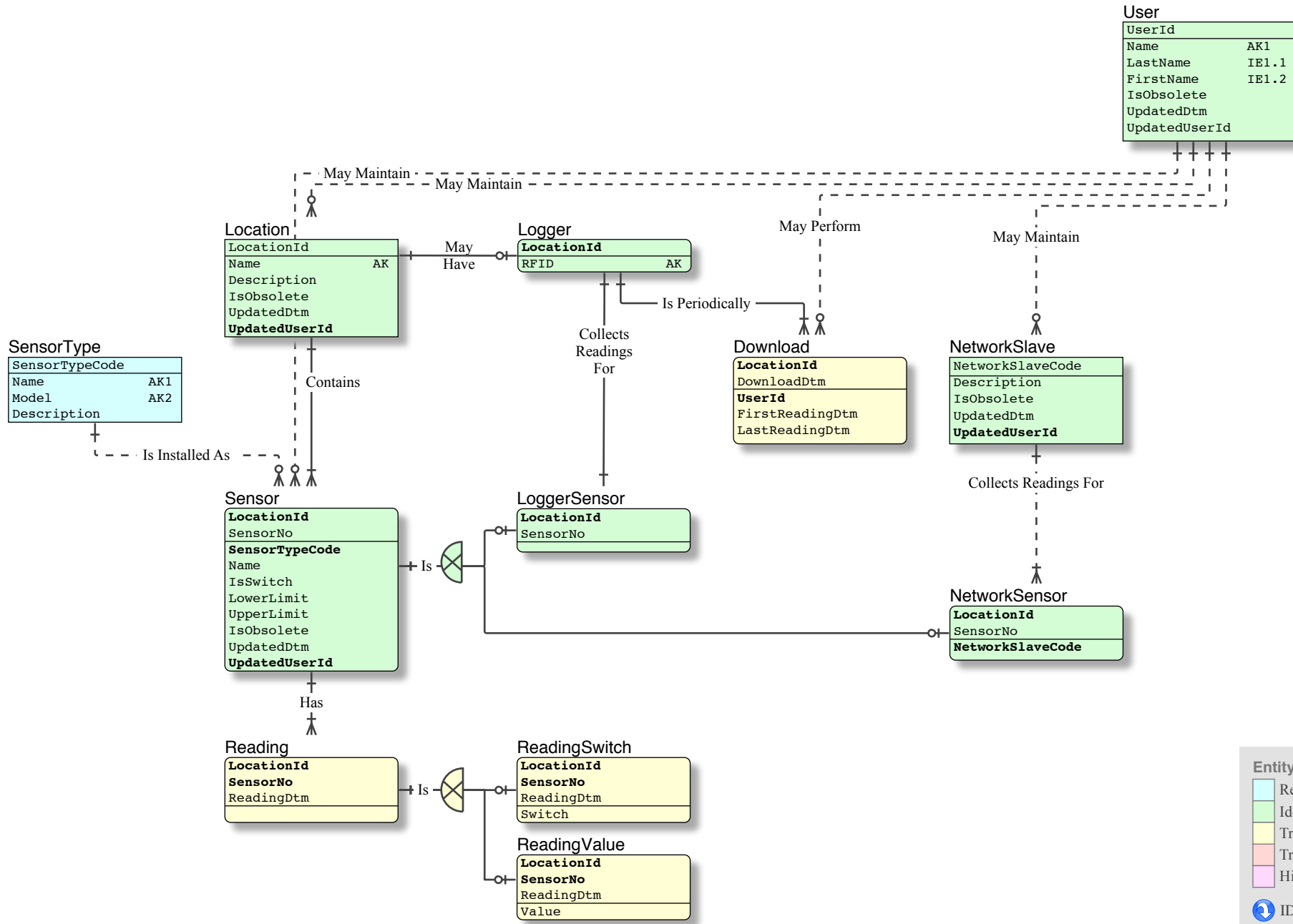
Mark Sensor Entity Relation

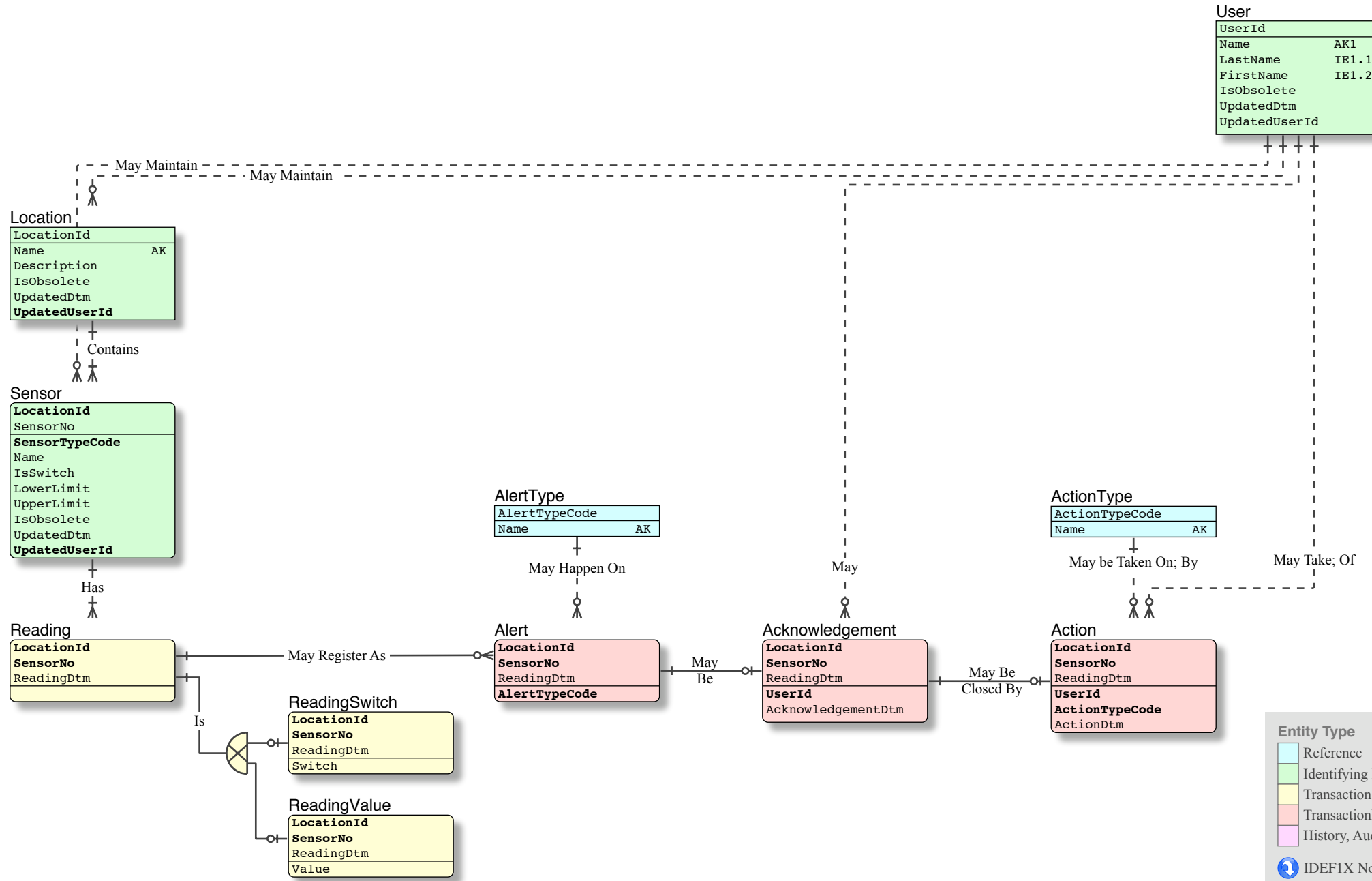


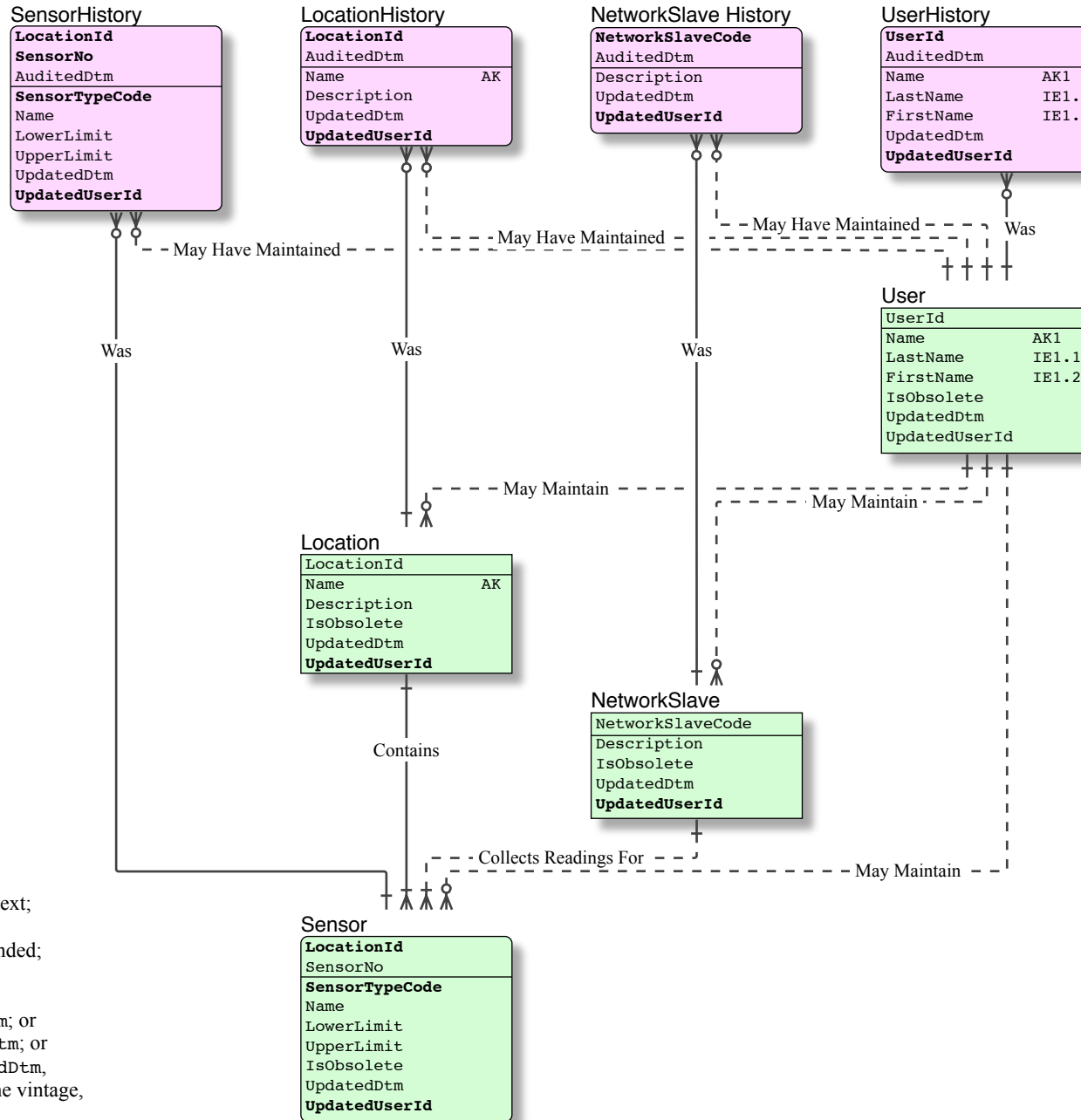
Select any entity for further detail

Entity Type

- Reference
- Identifying Entity
- Transaction
- TransactionDetail
- History, Audit
- IDEF1X Notation







Note

- The subtypes are not relevant in this context; certainly they need not be navigated.
- Only the tables subject to Audit are expanded; however the full context is shown.
- Temporal capability is provided. Eg. for:
 - a Sensor row of a given AuditedDtm; or
 - a Reading row of a given ReadingDtm; or
 - a Download row of a given DownloadDtm,
 the Location row applicable, of the same vintage, is identified by AuditedDtm.

Entity Type

- Reference
- Identifying Entity
- Transaction
- TransactionDetail
- History, Audit

IDEF1X Notation