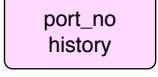
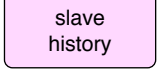
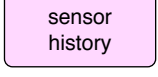
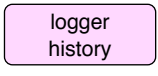
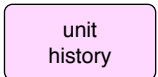
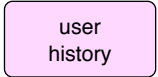
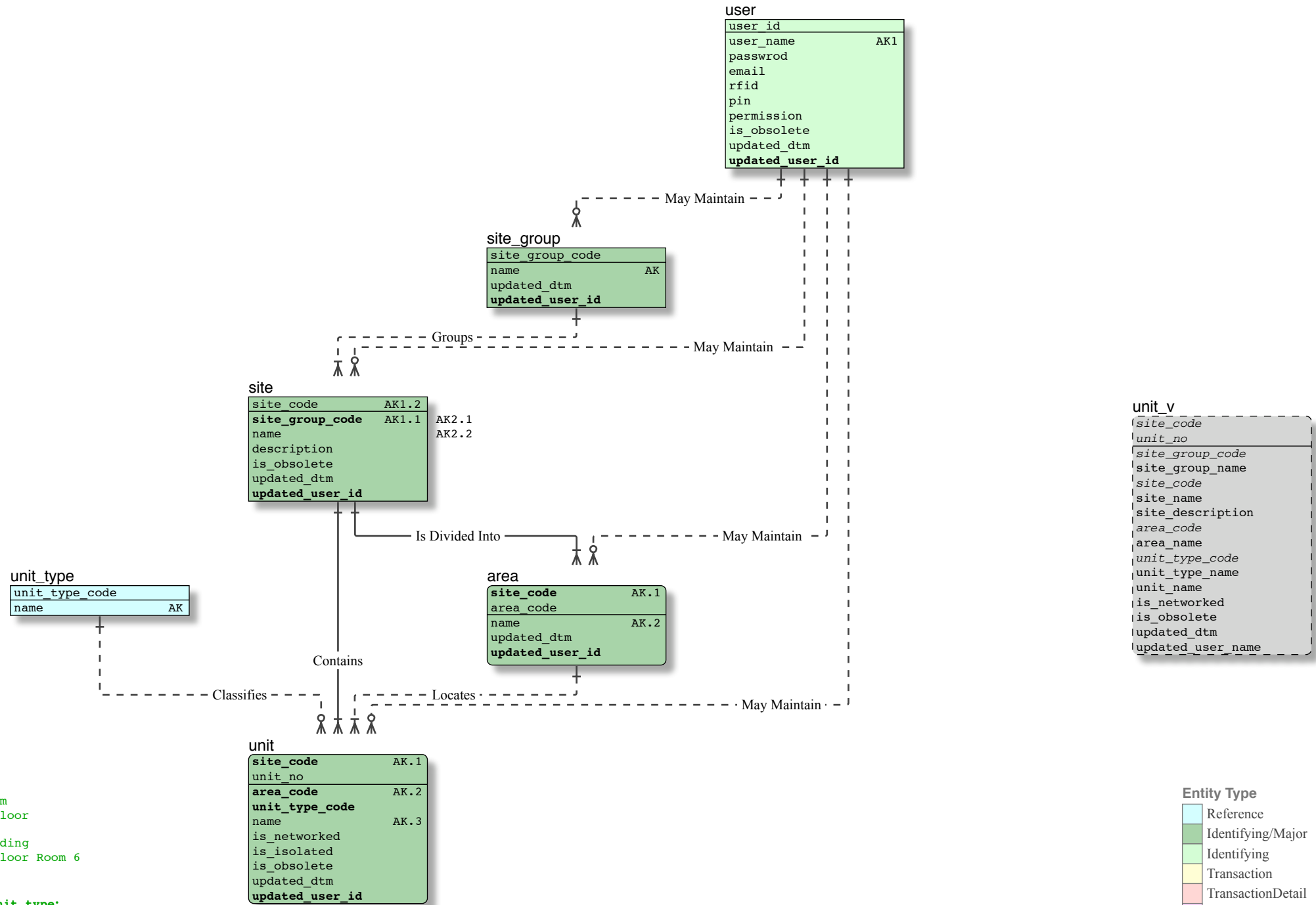


Every occurrence of updated_user_id references user; eleven such May Maintain Relations are not shown



- Entity Type**
- Reference
 - Identifying/Major
 - Identifying
 - Transaction
 - TransactionDetail
 - History, Audit



unit_type
 [0] Nounit
 Cb Cabinet
 Ch Chiller
 CR Coldroom

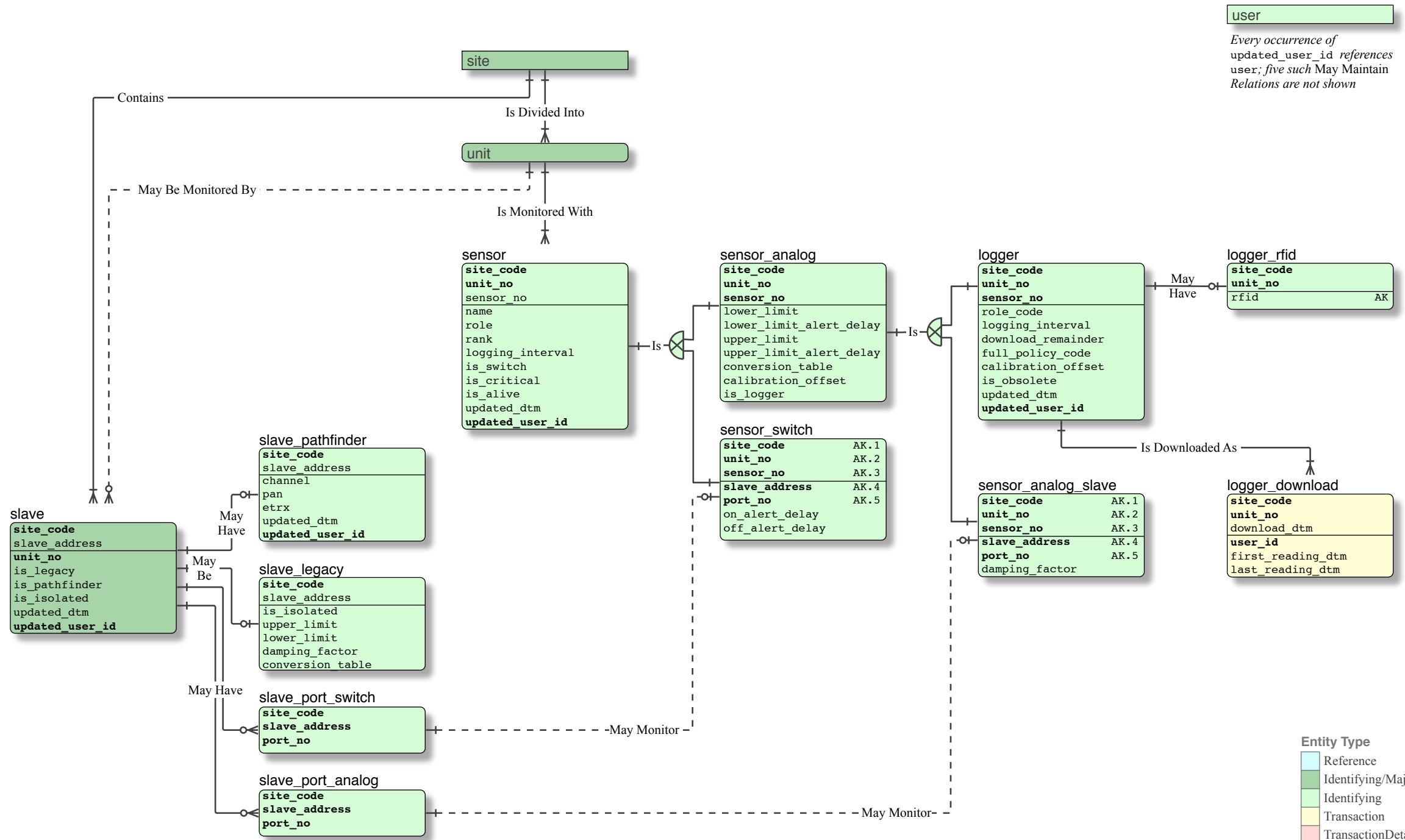
area
 CR Coolroom
 Lw Lower Floor
 Kt Kitchen
 Ot Outbuilding
 U6 Upper Floor Room 6

unit
 Display as **unit_no**, along with **area+unit_type**:
 056 CR [0] = Coolroom//Assorted
 167 Kt Cb = Kitchen/Cabinet/Milk
 374 Kt Ch = Kitchen/Chiller/Meat & Poultry

Entity Type

- Reference
- Identifying/Major
- Identifying
- Transaction
- TransactionDetail
- History, Audit

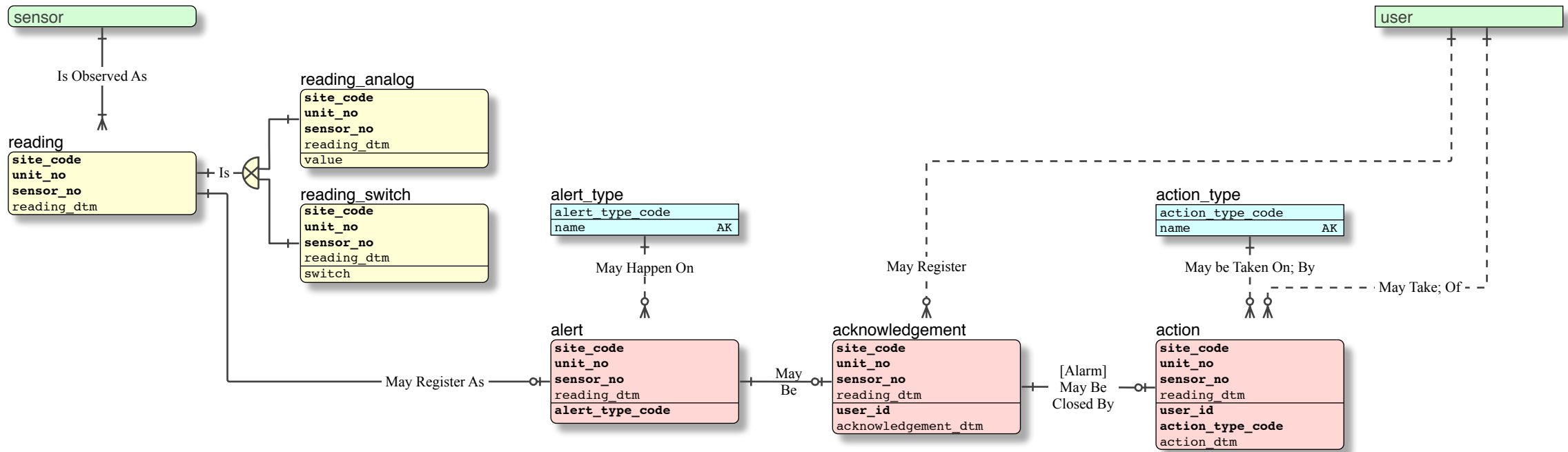
IDEFIX Notation



user

Every occurrence of updated_user_id references user; five such May Maintain Relations are not shown

- Entity Type**
- Reference
 - Identifying/Major
 - Identifying
 - Transaction
 - TransactionDetail
 - History, Audit



```

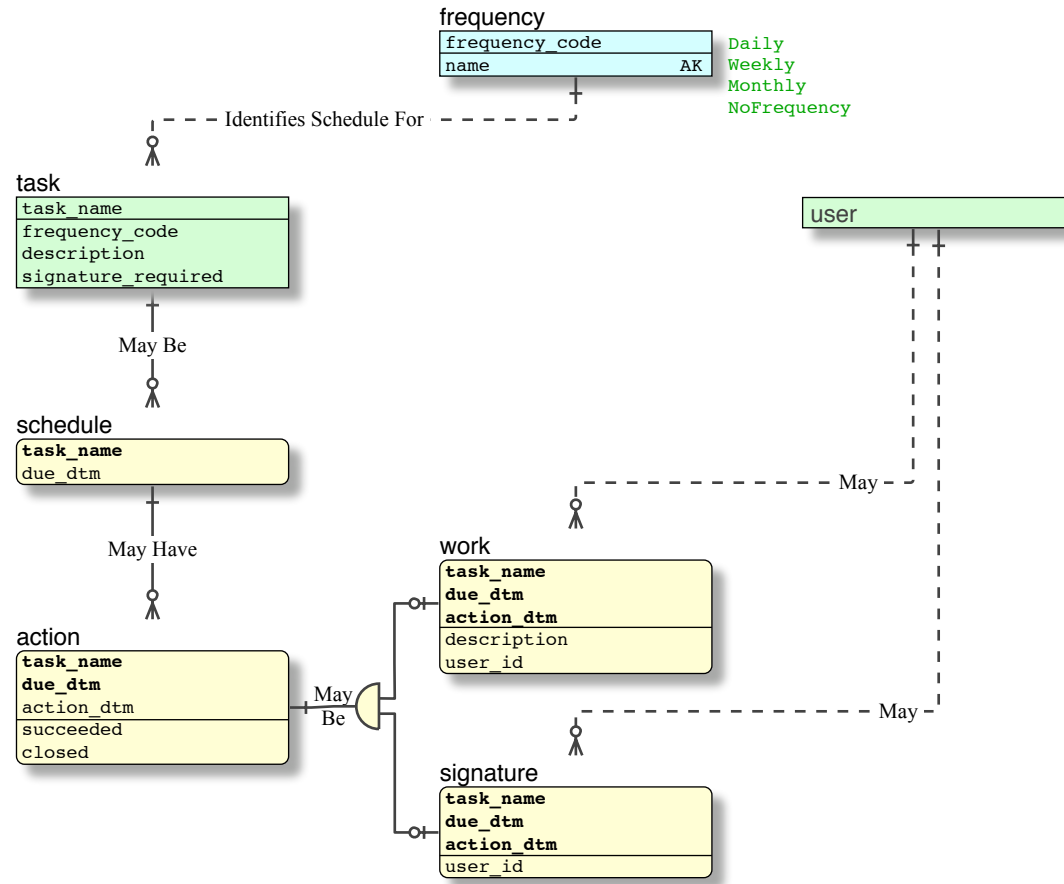
alert_analog_v
site_code
site_name
area_code
area_name
unit_type_code
unit_type_name
unit_no
unit_name
sensor_rank
sensor_no
sensor_name
alert_start_dtm
alert_end_dtm
value
alert_type_code
alert_type_name
acknowledgement_dtm
acknowledgement_user_id
action_type_code
action_type_name
action_dtm
action_user_id
    
```

alert type
 AL Alarm: BelowLowerLimit
 AH Alarm: AboveUpperLimit
 AO Alarm: On
 AI Alarm: Off
 Ao Alarm: Fault/Open
 AC Alarm: Fault/Closed
 Ax Alarm: NotResponding

Italics identify columns required for joins; not usually displayed

Entity Type
 Reference
 Identifying/Major
 Identifying
 Transaction
 TransactionDetail
 History, Audit

IDEFIX Notation



The four tables below task are prefixed task_ in the physical model.

Entity Type

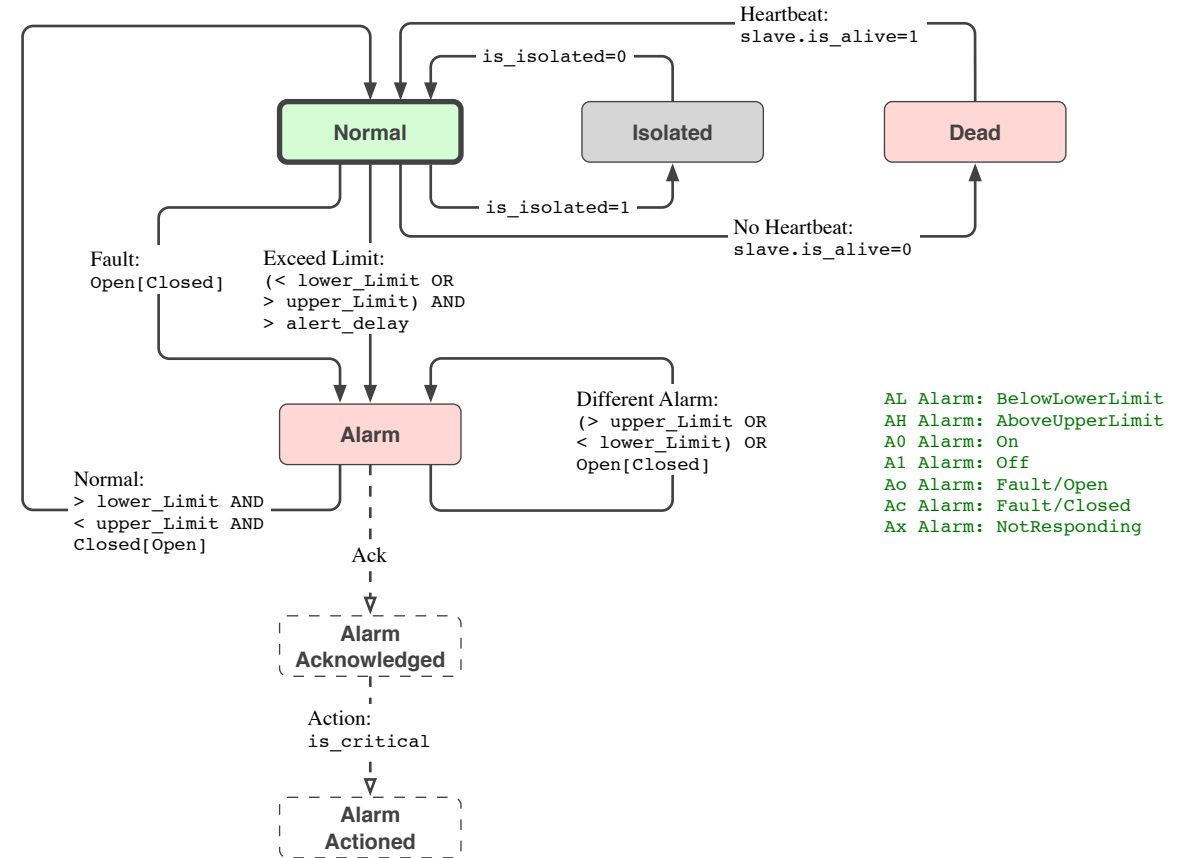
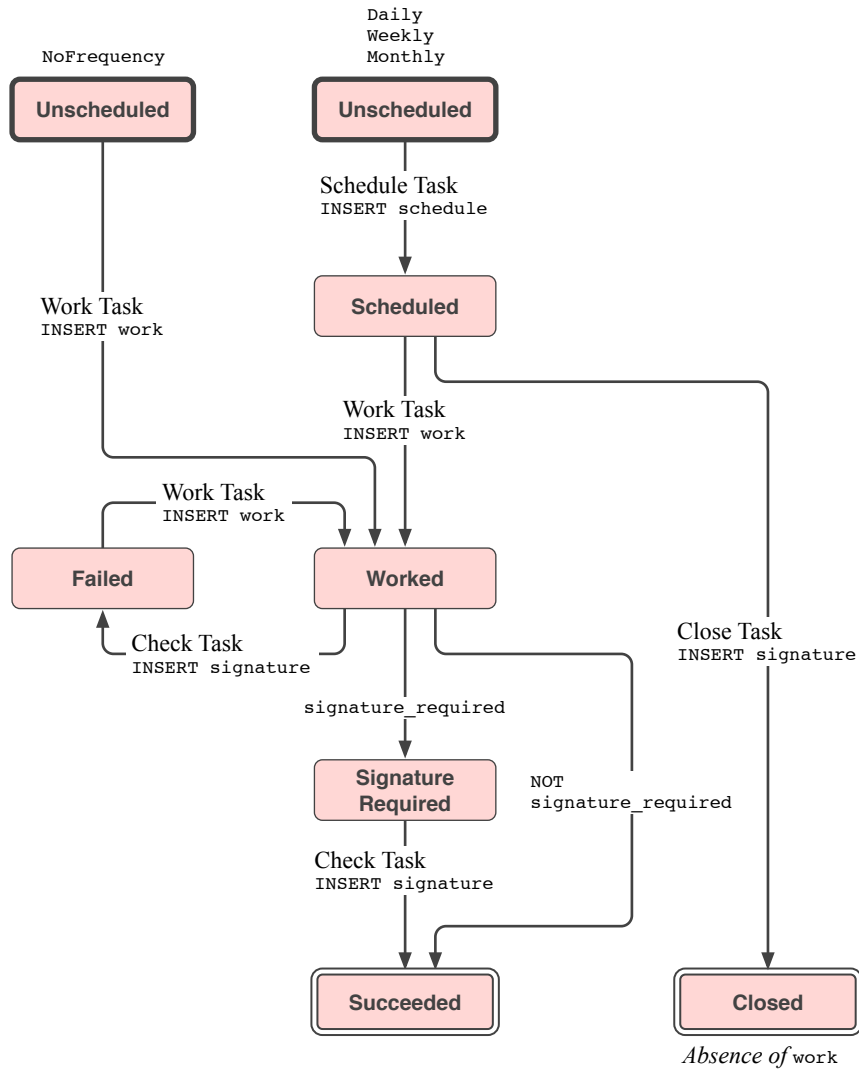
- Reference
- Identifying/Major
- Identifying
- Transaction
- TransactionDetail
- History, Audit

User Function
system action



Task

Sensor (Analog)



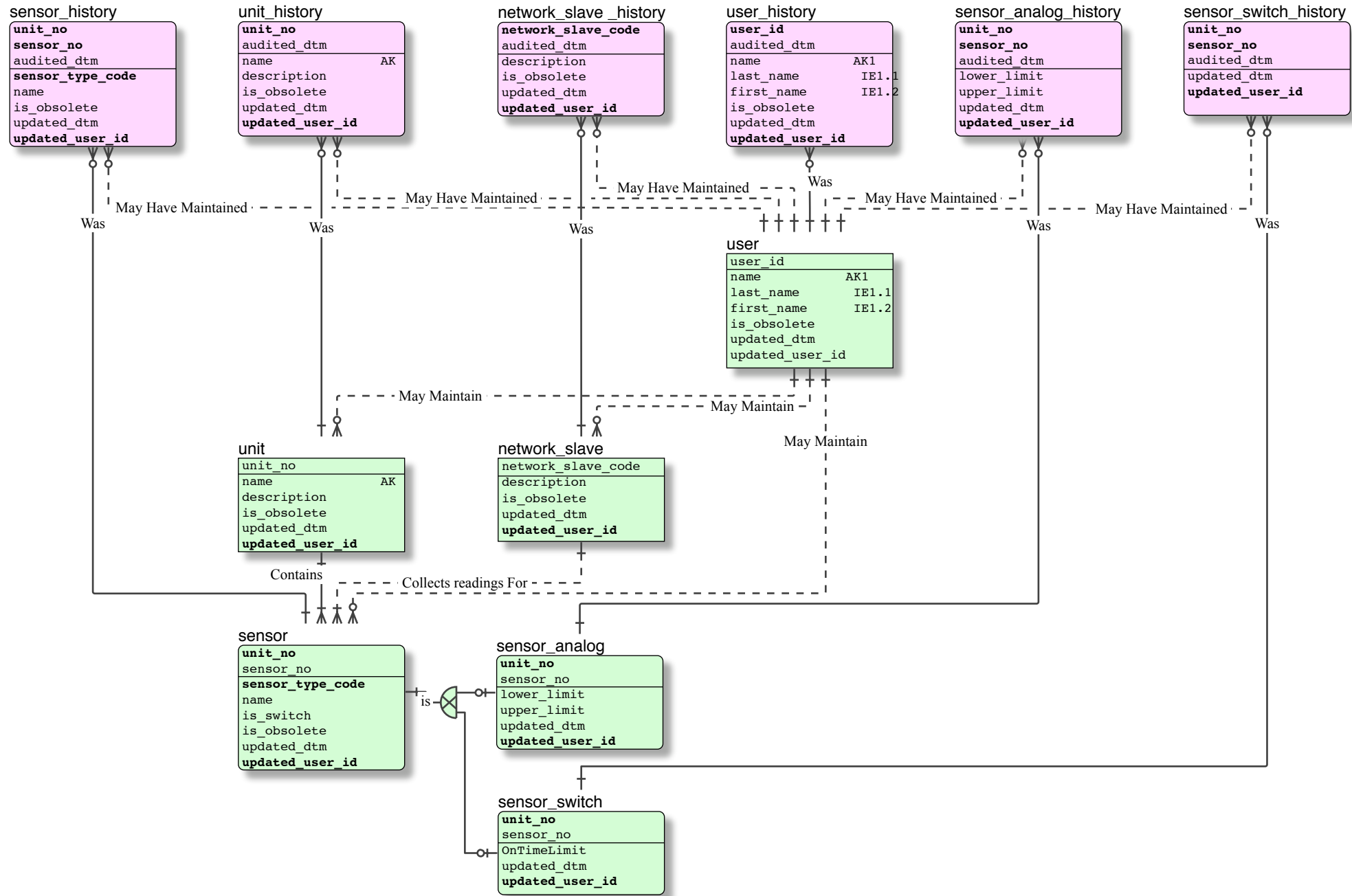
- AL Alarm: BelowLowerLimit
- AH Alarm: AboveUpperLimit
- A0 Alarm: On
- A1 Alarm: Off
- Ao Alarm: Fault/Open
- Ac Alarm: Fault/Closed
- Ax Alarm: NotResponding

- Entity Type
- Reference
 - Identifying/Major
 - Identifying
 - Transaction
 - TransactionDetail
 - History, Audit

User Function
System action

IDEFIX Notation

Mark Data Model History (Not Progressed) V0.23



- Entity Type**
- Reference
 - Identifying/Major
 - Identifying
 - Transaction
 - TransactionDetail
 - History, Audit

IDEFIX Notation